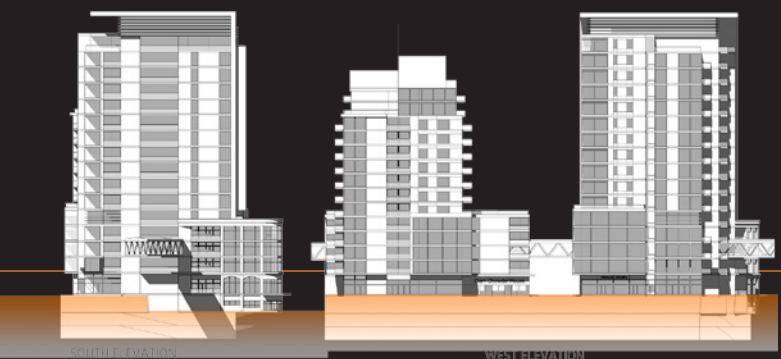


Recent Select Urban Design Projects:

- *Chengdu City Expansion, China*
- *New Glasgow Urban Design Study, NS*
- *St. Peter’s Village Master Plan, NS*
- *Dong Da Mixed Use Community, China*
- *Bedford South Master Plan, Halifax, NS*
- *Pleasantville Base Redevelopment Plan, NFLD*
- *Mount Saint Vincent University Master Plan, NS*
- *Portland Street Facade Study, Dartmouth, NS*
- *Zowara-Abu Kammesh City Master Plan, Libya*
- *500 Lot Heritage Study, Charlottetown, PEI*
- *Inglis Place Streetscape Plan, Truro, NS*
- *Bible Hill Core Area Downtown Plan, Bible Hill*
- *Inner Mongolia Neighbourhood Plan, China*
- *Dong Da City Master Plan, China*
- *Port Carling Streetscape Study, Ontario*
- *Debert Air Industrial Park Master Plan*
- *Bible Hill Core Area Plan*
- *Main Street Streetscape Study, NS*
- *Greenwich Planning Study, NS*
- *Stariford Core Area Plan*
- *Saint John Civic Core Master Plan*
- *Charlottetown Downtown 500 Lot Strategy*
- *Truro Urban Design Strategy*
- *Town of Stellarton Strategic Plan*
- *Liuzhou City Design, China*
- *FuzhouMaster Plan Community, China*
- *Town of Wolfville’s Commercial Development Plan*
- *Reeves & Granville Streetscape Design Study,*
- *Sydney Downtown Facade & Signage Study*
- *Exit 12 Commercial Development Study*
- *Truro Heritage District Study, NS*
- *Kingstec College Campus Master Plan*
- *Acadia University Campus Landscape Master Plan, NS*
- *Times Square Tower Microclimate Study, New York, USA.*

Waterfront Planning

- *Dar Es Salaam Waterfront Plan, Tanzania*
- *Sheet Harbour Waterfront Plan, NS*
- *Souris Harbour Plan, PEI*
- *Dar Es Sallaam Waterfront Plan, Tanzania, Africa*
- *Lunenburg Waterfront Development, NS*
- *Historic Properties Redevelopment, NS*
- *Queens Landing Waterfront Development, NS*
- *Saint John Coast Guard Site Redevelopment*
- *Charlottetown Harbour Plan, PEI*
- *Wrights Cove Master Plan, Halifax*
- *Pugwash Waterfront Plan, NS*
- *Grand Etang Waterfront Plan, NS*
- *Port Morien Town Square, NS*
- *Arisag Waterfront Plan, NS*
- *Bayfield Waterfront Plan, NS*
- *Port Hood Waterfront Plan, NS*
- *Canso Waterfront Plan, NS*
- *Port Hawkesbury Waterfront Plan, NS*
- *Saint John Waterfront Greenway, NB*
- *St. John’s Waterfront Tourism Study, NFLD*
- *West Point Waterfront Development, PEI*
- *Alberton Waterfront Plan, PEI.*



Ekistics Planning Design is a multidisciplinary planning and design firm that offers a range of services in landscape architecture, environmental planning, resort planning, civil engineering, architecture and urban design. The firm works on a wide range of projects from large scale waterfronts, regional planning studies, and national parks to smaller scale parks, gardens, campuses, and urban spaces. Striking a balance between people and natural systems, Ekistics applies sound ecological planning principles which stress the alliance of science, technology, and design.

www.ekistics.net

United States
t 1.207.266.3230
f 1.207.433.1114
us@ekistics.net

Canada
t 1.902.461.2525
f 1.902.465.3131
canada@ekistics.net

Waterfront/Riverfront Planning

Downtown Revitalization

Urban Planning

Context Sensitive Design

Campus Planning

Form Based Code

Streetscape Design

Park & Recreation Planning

Regional Planning

Signage & Wayfinding

Urban Design



Urban Design shapes physical settings – from towns and villages, to cities and regions. It combines the skills of urban planning, landscape architecture, architecture, civil and traffic engineering, real estate development, and environmental design. Typical urban design projects include downtown revitalization, streetscape and city design, civic signage design, regional planning, as well as planning for waterfronts, greenways, parks, and campuses. Urban design builds on an established sense of place that is local in character and satisfies elementary needs specific to that place. This approach engages local citizens to collectively determine what makes their community special, motivating them to solve large scale problems or realize hidden opportunities.

EKISTICS PLANNING & DESIGN



URBAN DESIGN

LANDSCAPE ARCHITECTURE

ENVIRONMENTAL PLANNING

GOLF & RESORT

SPORT

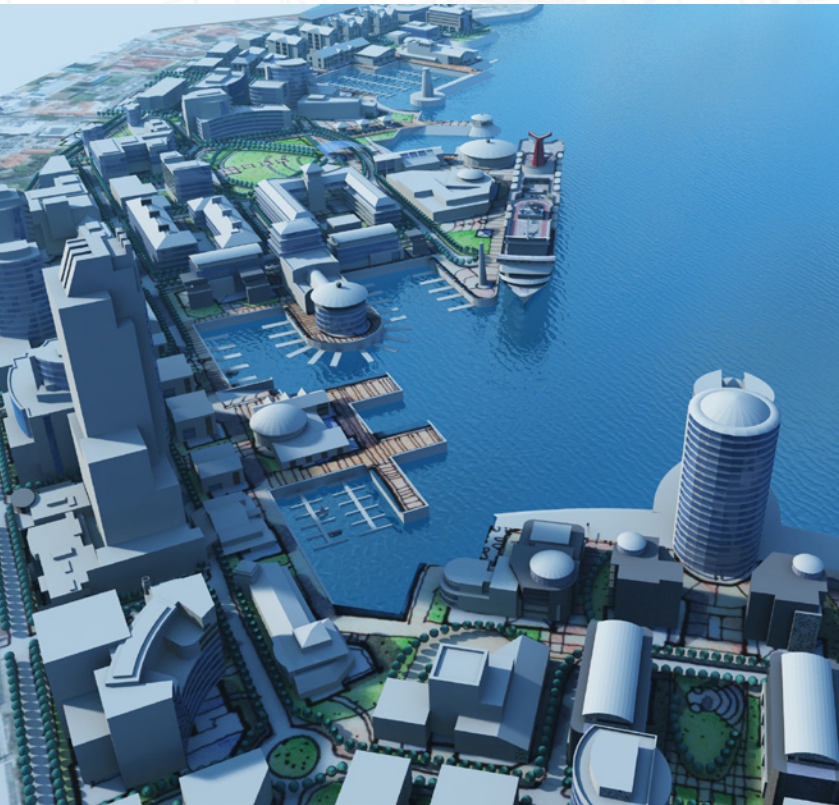
Urban design makes connections between people and places, time and space, movement and urban form, nature and the built fabric. It combines the art of place-making with environmental stewardship, social equity, and economic viability to create places of distinction and identity.

Downtown Revitalization

Downtown change is an ongoing process for cities, villages, and towns. Without active planning and concerted effort, downtowns can degenerate into civic liabilities. Downtown revitalization requires an understanding of development economics, district incentives, heritage planning, streetscape planning, civic art, park planning, events programming, and district management.

Wayfinding & Civic Signage

Wayfinding and civic signage is an essential aspect of downtown revitalization, waterfront planning, as well as heritage and tourism planning. It is important for both residents and tourists. Ekistics' sister firm, Form:Media (www.form-media.ca) focuses on wayfinding, environmental graphic design, and interpretive planning. This type of work is an integral part of the urban design process for all our projects.



- 4X CIVIC SQUARES
- 4X CULTURAL LANDSCAPES
- 7X FORECOURTS AND GREENS
- 20X POTENTIAL PLAZAS

- PUBLIC OPEN SPACES
- CIVIC SQUARES
- HERITAGE AND CULTURAL LANDSCAPES
- FORECOURTS AND GREENS
- POTENTIAL PLAZA
- CONNECTION CORRIDOR



Waterfront / Harbour Planning & Design

Waterfront Planning is a special branch of urban design that requires a myriad of skills. For urban areas, waterfront planning is often involved in environmental remediation, finding the best uses for scarce waterfront resources, connecting downtown areas to the waterfront, and building consensus between landowners, the public, and various government departments with vested interests in these special places. Port and harbour planning requires a unique understanding of the economics of waterfront land uses, while riverfront planning requires an understanding of the ecology of rivers, as well as stormwater and floodplain management.

Streetscape Design

Streets provide much of the setting for social interaction in a city or town, acting as both conduits and destinations. Depending on the setting and the role of the street, streetscape design can be an integral part of city planning and civic identity. The process usually reconciles the various needs of user groups (pedestrians, cars, bikes, buses, etc). Through a public process, a design is fashioned that responds to the needs of these users groups. The end result emphasizes the street as a destination, while strengthening its role as a conduit.



Heritage & Tourism Planning

Our cultural heritage is one of our greatest assets. Cultural heritage resources include both built and natural features that have historic, architectural, archaeological, scenic, or natural significance; have been modified by human activities; and are considered to be of value to the community. Heritage planning manages change to ensure conservation of a city's cultural heritage resources. Conservation involves identifying heritage resources and interpreting their significance; protection through physical and legal means; and using cultural heritage resources in responsible and sustainable ways that serve both individual needs and community interests. These heritage assets play an important role in civic identity and are thus a valuable component of the downtown economy.

